



Department of Public Works

Engineering Division

Robert F. Phillips, P.E., City Engineer

City-County Building, Room 115

210 Martin Luther King, Jr. Blvd.

Madison, WI 53703

Phone: (608) 266-4751 | Fax: (608) 264-9275

engineering@cityofmadison.com

cityofmadison.com/engineering

March 19, 2019

Deputy City Engineer

Gregory T. Fries, P.E.

Deputy Division Manager

Kathleen M. Cryan

Principal Engineer 2

Christopher J. Petykowski, P.E.

John S. Fahrney, P.E.

Principal Engineer 1

Christina M. Bachmann, P.E.

Mark D. Moder, P.E.

Janet Schmidt, P.E.

Facilities & Sustainability

Jeanne E. Hoffman, Manager

Bryan Cooper, Principal Architect

Mapping Section Manager

Eric T. Pederson, P.S.

Financial Manager

Steven B. Danner-Rivers

NOTICE OF ADDENDUM

ADDENDUM NO. 4

CONTRACT NO. 7528, PROJECT NO. 10305 NAKOOSA TRAIL FLEET/FIRE/RADIO SHOP FACILITY

Revise and amend the contract document(s) for the above project as stated in this addendum, otherwise, the original document shall remain in effect.

This addendum consists of the following documents:

- **Reponses to Bidders Questions in Section 2**
- **Specification changes outlined in Section 4**
- **Drawings changes as detailed in Section 5**

1. **GENERAL CONTRACT CONDITIONS**

No change

2. **GENERAL QUESTIONS AND ANSWERS**

Q1: Dunn Edwards is not a readily available paint in WI. Please advise as to a match for Sherwin Williams, Hallman Lindsey, etc. as these are local paint manufacturers.

A1: Other acceptable paint companies include Sherwin Williams, Hallman Lindsey, Benjamin Moore, Diamond Vogel, PPG, and similar local paint manufacturers.

Q2: Confirm that the wall between grid line 16 & 17 is changed from 12" CMU to precast concrete.

A2: Yes confirming that the interior wall has changed to precast concrete, full height, between grid lines 16 & 17, where shown on Addendum No. 3 sheets A-104, A-105, & A-106 for reference.

Q3: Is thickened edge at exterior precast walls required? This is not shown in structural (see 5/S-511).

A3: A thickened edge is not required at the floor slab.

Q4: Should fencing extend through alternate storage building if it doesn't get accepted? If so, which fence type?

A4: Provide 6'-0" tall chain link fence through the alternate storage building if Alternate No 1 doesn't get accepted.

3. **ACCEPTABLE EQUIVALENTS**

No change

4. **SPECIFICATIONS**

- A. Section 03 30 00 – Cast In Place Concrete
 - i. ~~DELETE~~ – Section 3.7.B “Light Reflective Finish” See specification 03 35 53.13”
- B. Section 03 30 00 – Cast In Place Concrete
 - Revise 2.12.b.7 to include synthetic fiber shown below.

a. Interior: Do not allow air content of trowel-finished floors to exceed 3 percent.

b. ~~Exterior: 6 percent, plus or minus 1.5 percent at point of delivery.~~

7. Synthetic Fiber: Uniformly disperse in concrete mixture at manufacturer's recommended rate, but not less than a rate of 5 lb/cu. yd.

- a. Products
 - 1) Forta Ferro
 - 2) FRC HPS 950

C. Concrete Toppings: Normal-weight concrete.

- C. Section 14 45 00 – Vehicle Lifts
 - Revise 2.4.E. Lift, Parallelogram, Accessories: Change rolling jack capacity to 42,000 pounds.

E. Accessories:

1. 42,000 rolling jack
2. Track lighting
3. Tape switch, 42 foot track

- 1. Repair bays:
 - a. Center jack: 42,000 pound capacity, should slide on inner rail, one each
 - b. Wheel set: Retractable, for loading or unloading of accessory center jack, one each
 - c. Platform lighting system: Individual fluorescent lamps (built in), with unitized waterproof construction and clear shatterproof tubes, eight each
 - d. Finish: Durable enamel in manufacturer's standard color

- D. Section 07 41 13.16 – STANDING SEAM METAL ROOF PANELS
 - Add under paragraph 2.2.1 comparable product by Peterson Aluminum and MBCI.

5. **DRAWINGS**

- A. **MODIFIED** A-126 MISC ROOF PLANS with markups of support angle locations at the intermediate sidelap of MS-3 perforated panels. See attached drawing sheet.
- B. **MODIFIED** A-510 CANOPY DETAILS with support angle at intermediate sidelap of perforated panels.
- C. **MODIFIED** S-451 MISCELLANEOUS FRAMING PLANS. See attached drawing sheet.
- D. **MODIFIED** S-601 STRUCTURAL SCHEDULE Add structural column schedule general note:
1. ALL BASEPLATES ARE 3/4" THICK UNO. (Drawing sheet not attached.)

6. **PROPOSAL**

No change

7. **ADDITIONAL DOCUMENTS**

No change

Please acknowledge this addendum on page E1 of the contract documents and/or in Section E: Bidder's Acknowledgement on Bid Express.

Electronic version of these documents can be found on Bid Express at:

<https://www.bidexpress.com/>

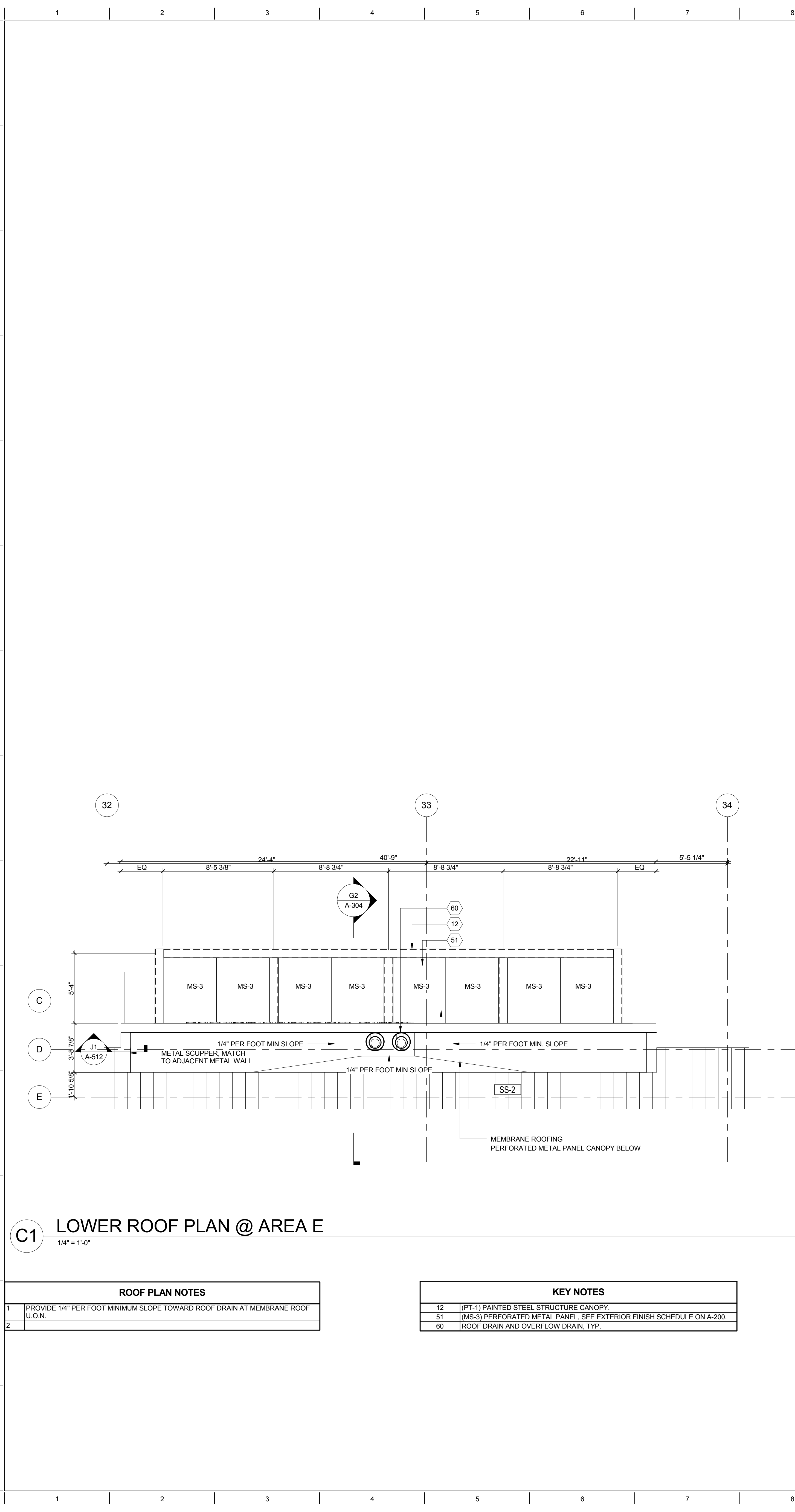
If you are unable to download plan revisions associated with the addendum, please contact the Engineering office at 608-266-4751 to receive the material by another route.

Sincerely,

A handwritten signature in black ink, appearing to read "Robert Phillips", written over a horizontal line.

Robert F. Phillips, P.E., City Engineer

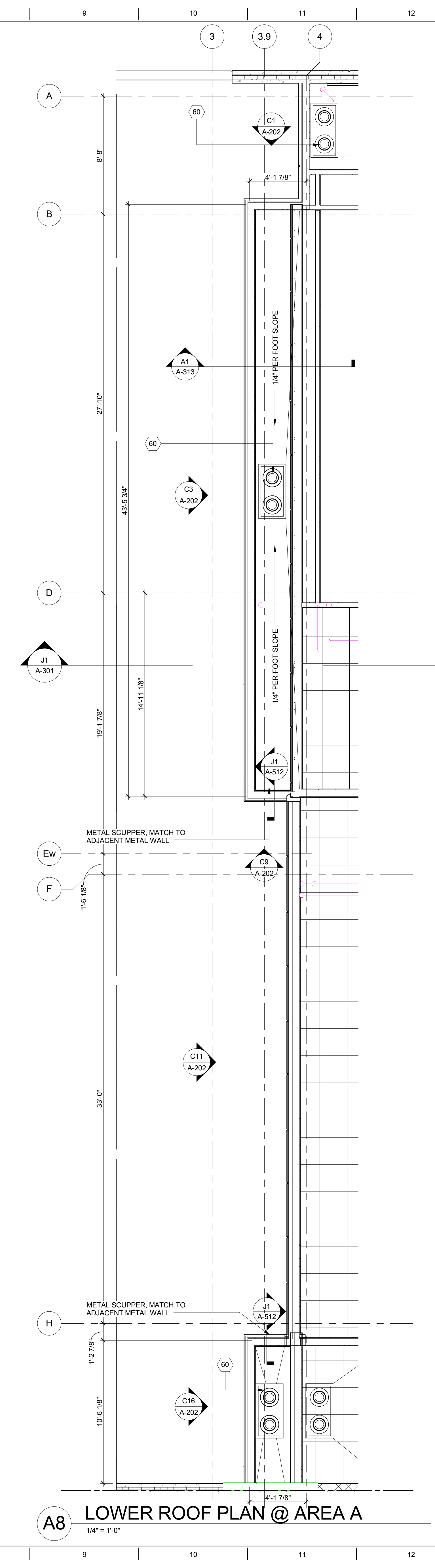
Cc: Greg Fries, Kathy Cryan



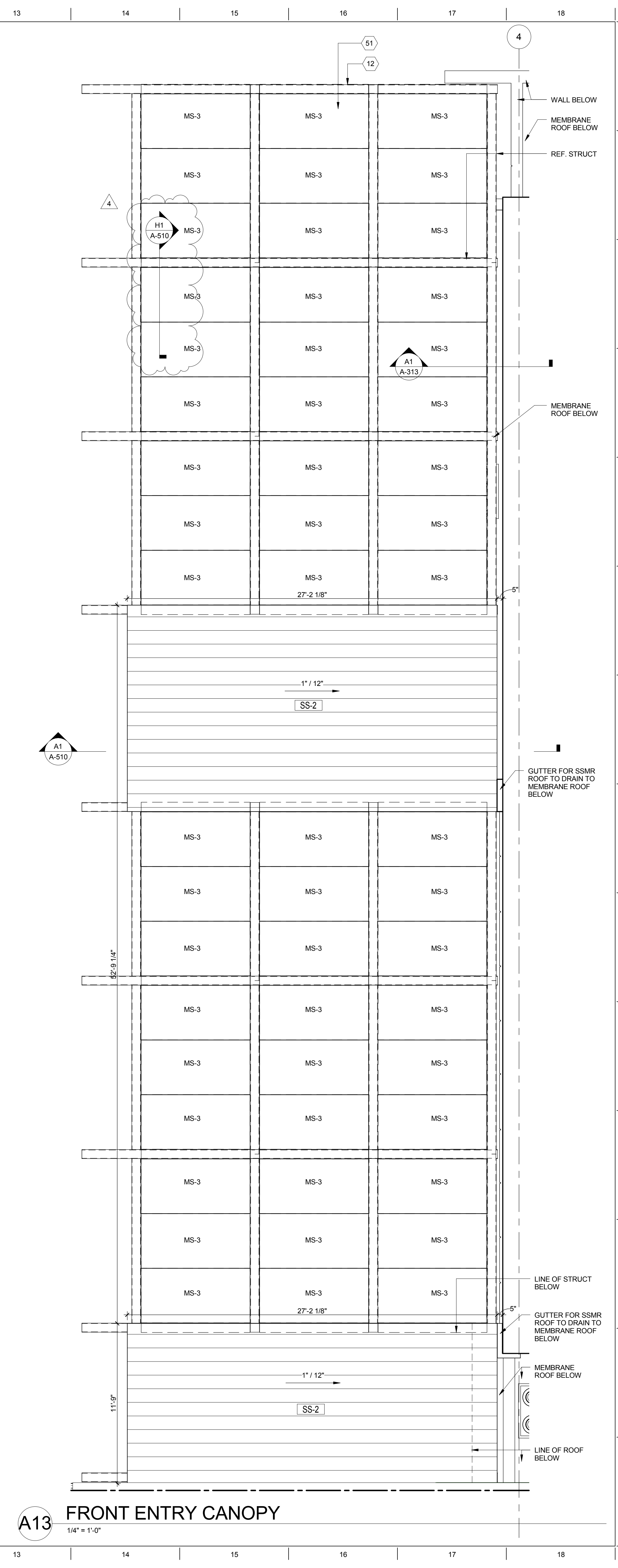
C1 LOWER ROOF PLAN @ AREA E
1/4" = 1'-0"

ROOF PLAN NOTES	
1	PROVIDE 1/4" PER FOOT MINIMUM SLOPE TOWARD ROOF DRAIN AT MEMBRANE ROOF U.O.N.
2	

KEY NOTES	
12	(PT-1) PAINTED STEEL STRUCTURE CANOPY
51	(MS-3) PERFORATED METAL PANEL. SEE EXTERIOR FINISH SCHEDULE ON A-200.
60	ROOF DRAIN AND OVERFLOW DRAIN, TYP.

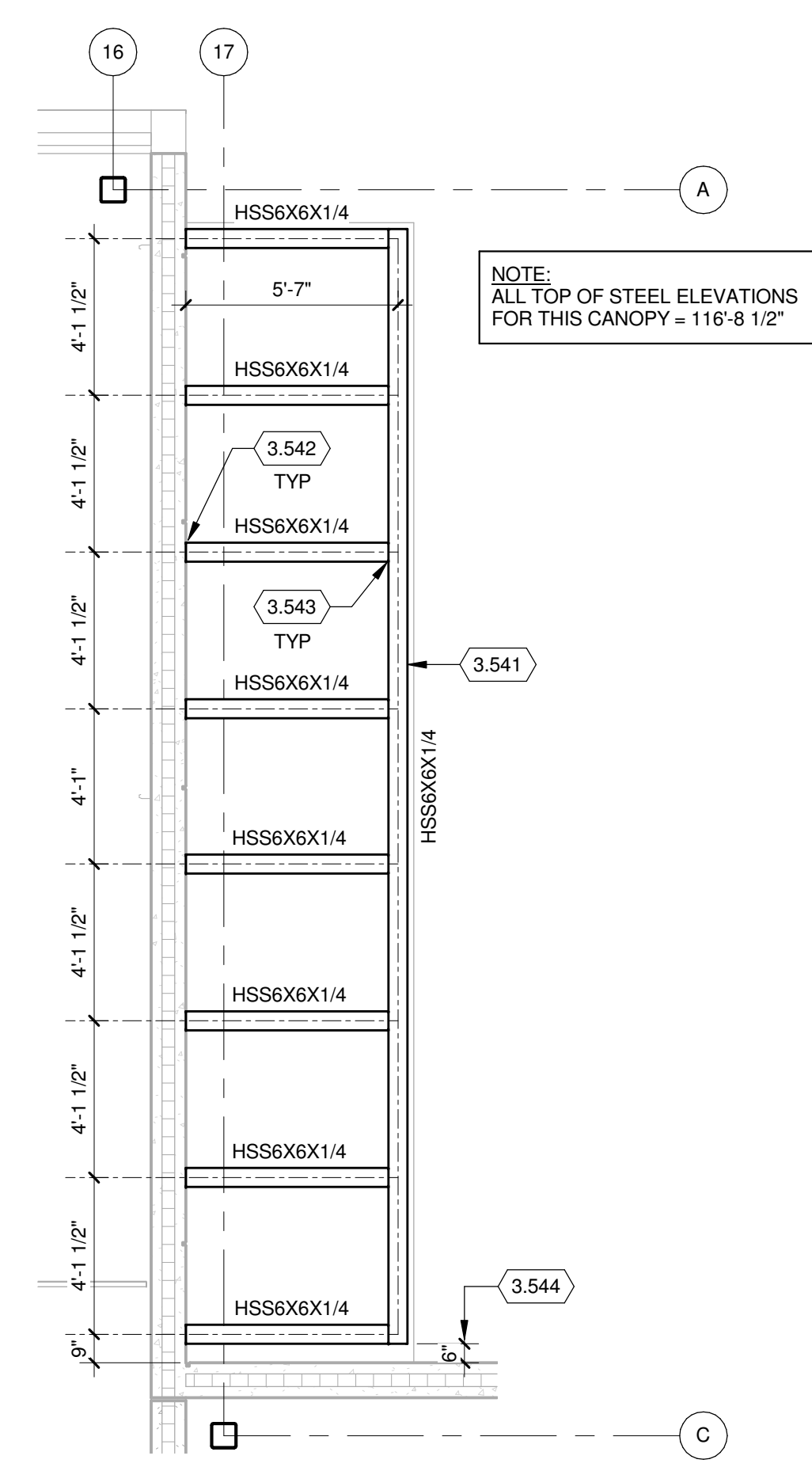


A8 LOWER ROOF PLAN @ AREA A
1/4" = 1'-0"

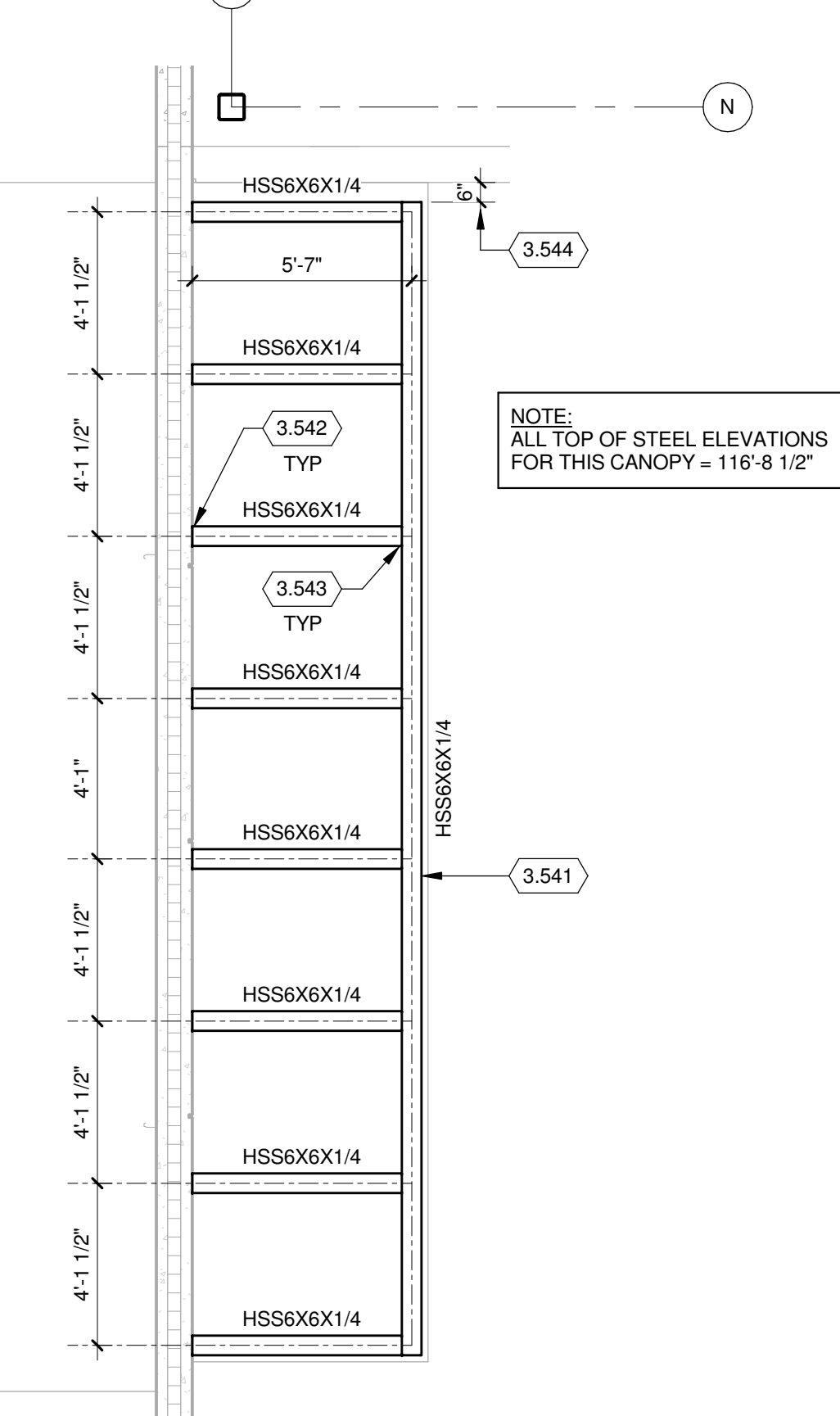


A13 FRONT ENTRY CANOPY
1/4" = 1'-0"

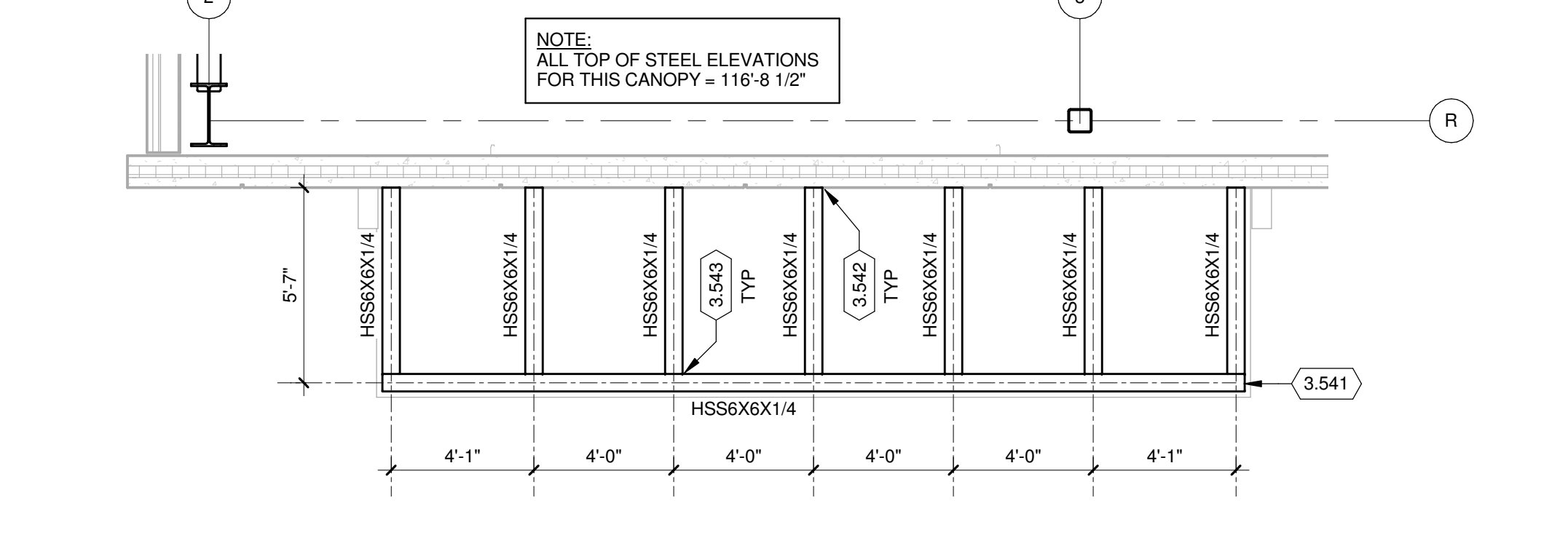
C:\Users\james\OneDrive\Documents\Projects\376603\A-126.dwg
 Drawn By: AutoCAD
 1/18/2019 10:15 AM



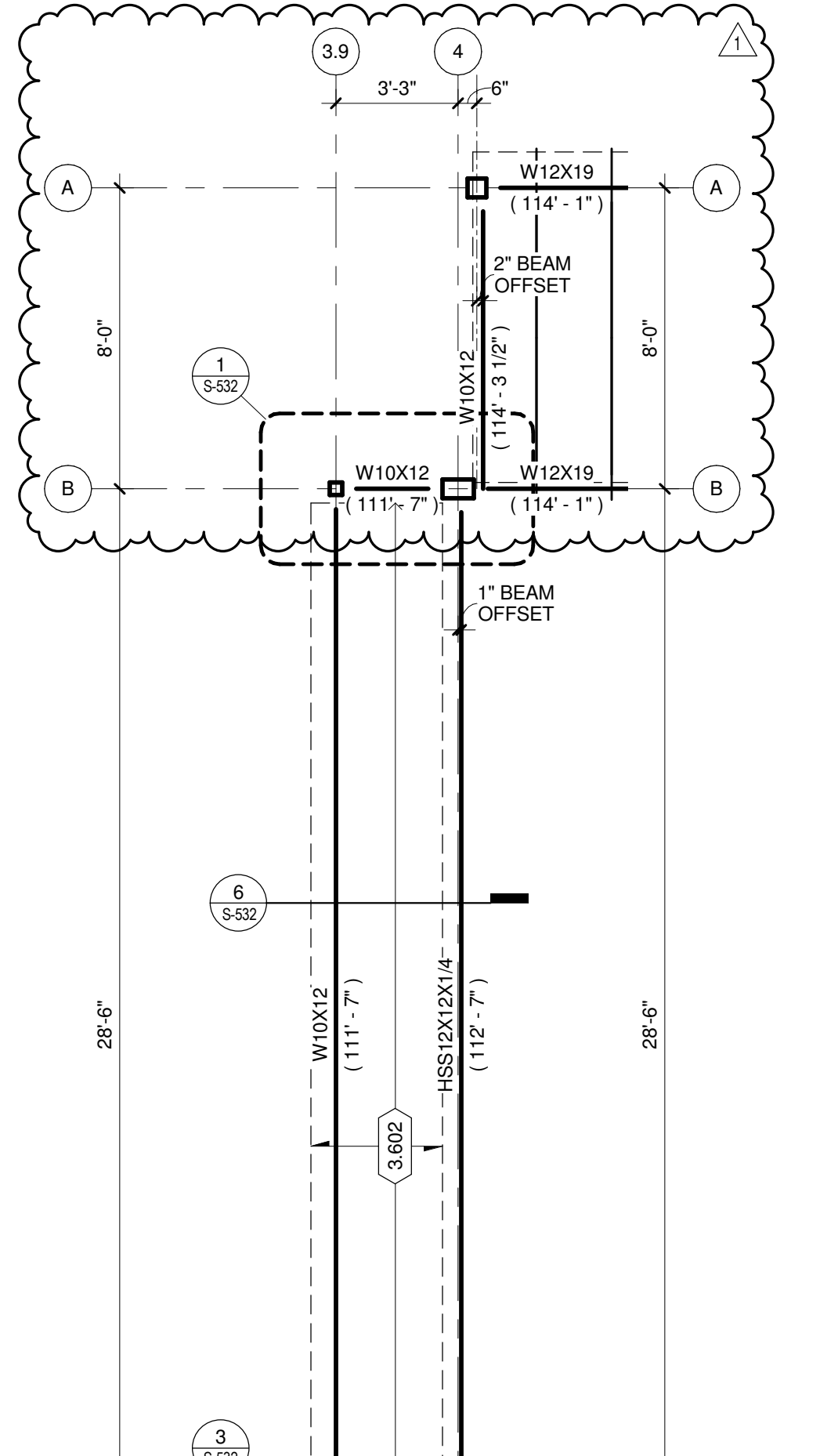
DOOR CANOPY FRAMING PLAN - AREA A
1/4" = 1'-0"



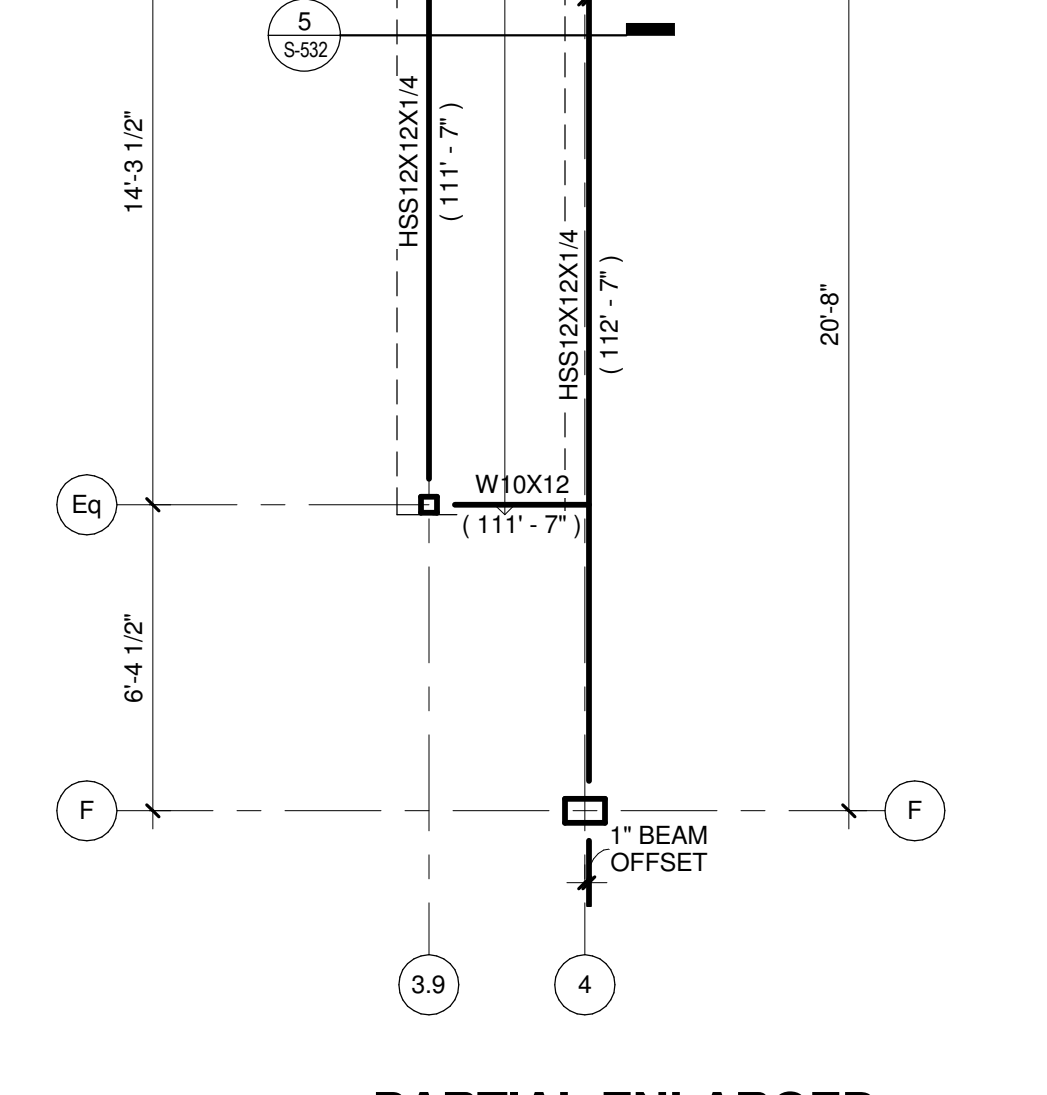
DOOR CANOPY FRAMING PLAN - AREA B
1/4" = 1'-0"



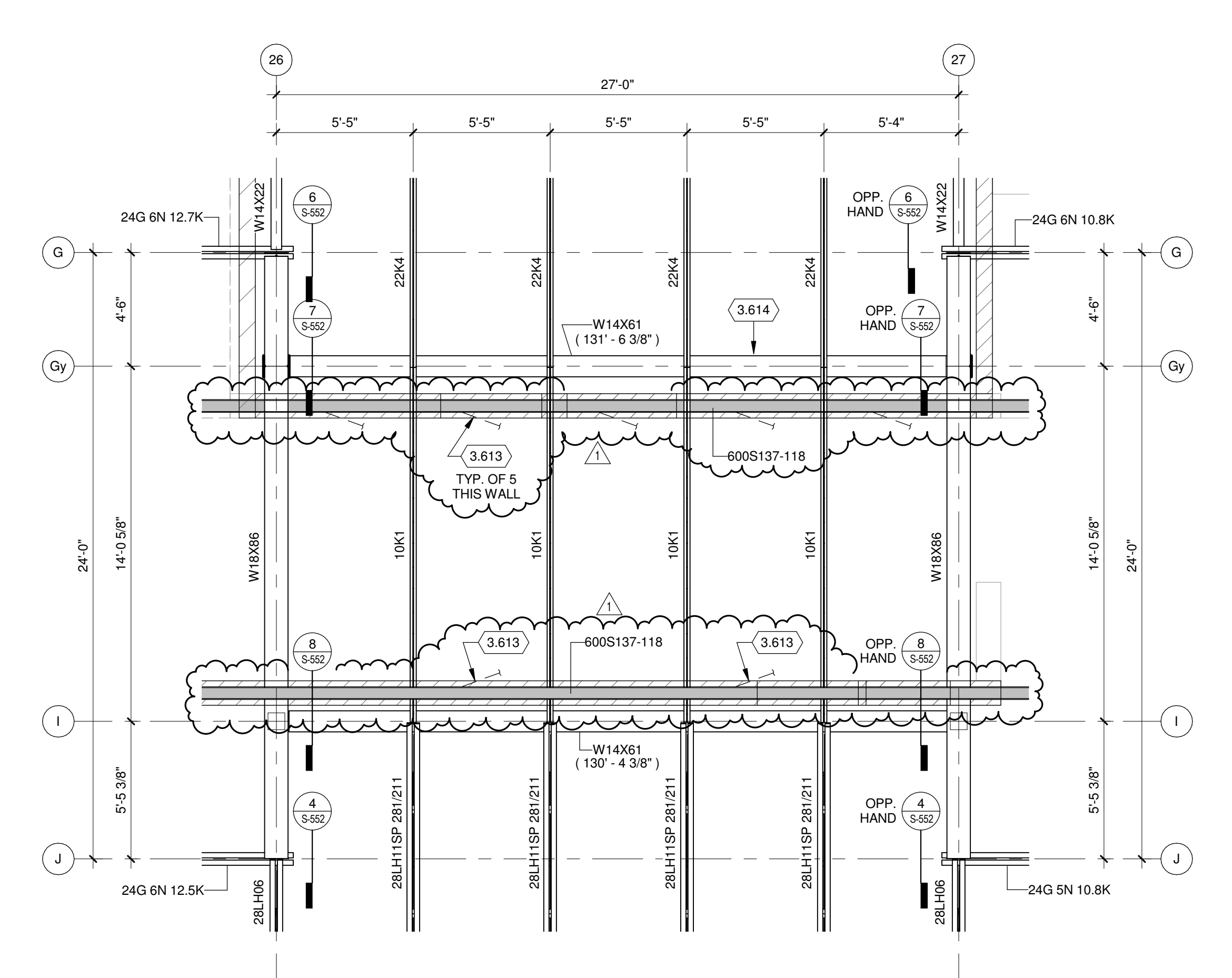
DOOR CANOPY FRAMING PLAN - AREA C
1/4" = 1'-0"



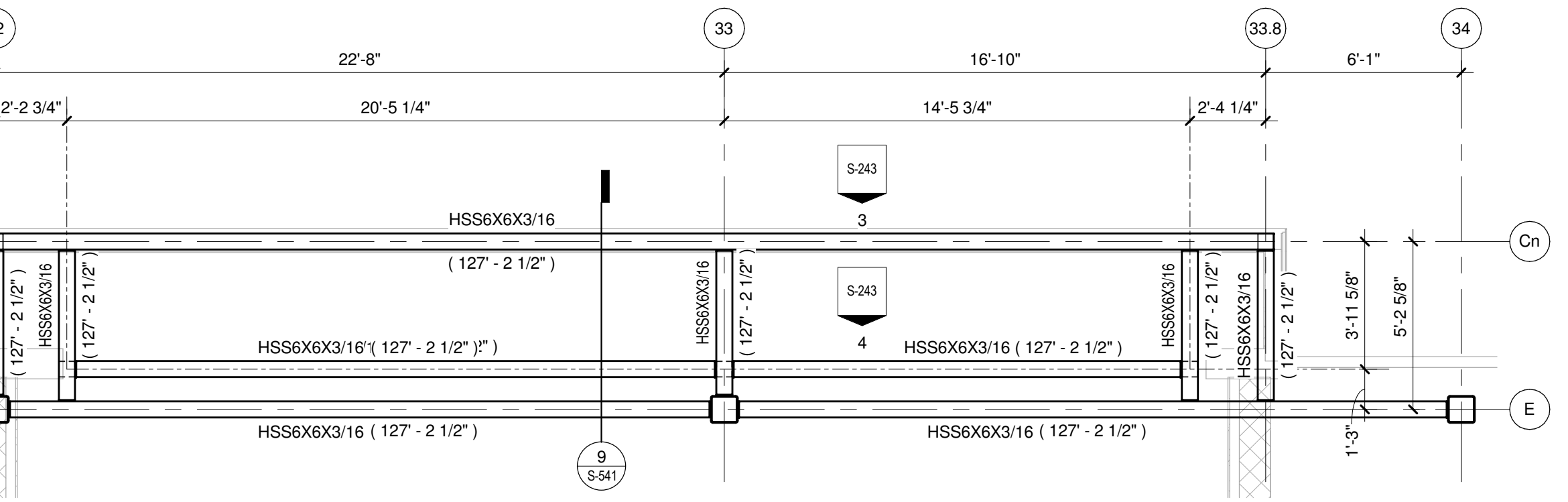
PARTIAL ENLARGED LOW ROOF FRAMING PLAN AREA A
1/4" = 1'-0"



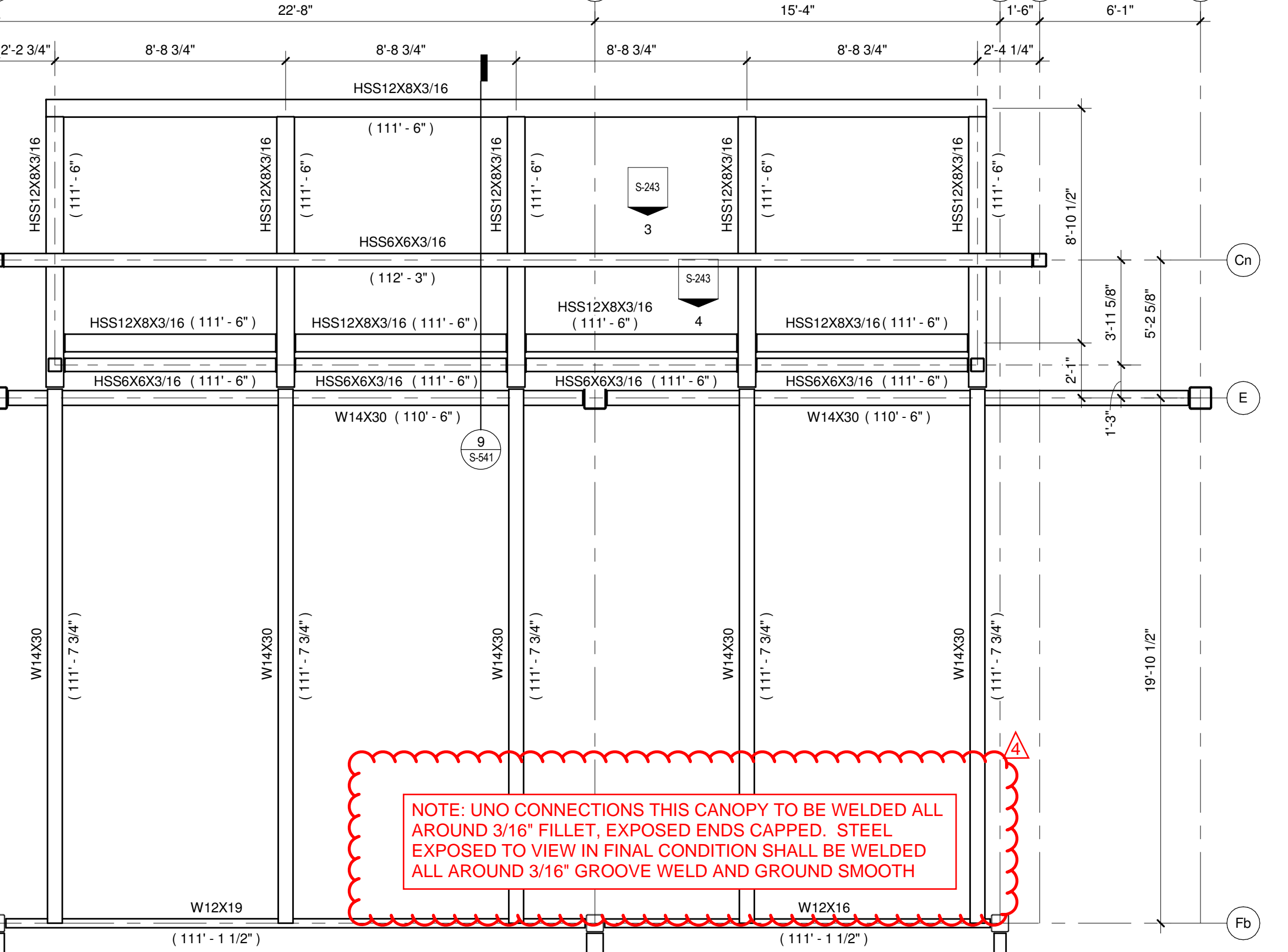
PARTIAL ENLARGED LOW ROOF FRAMING PLAN AREA B
1/4" = 1'-0"



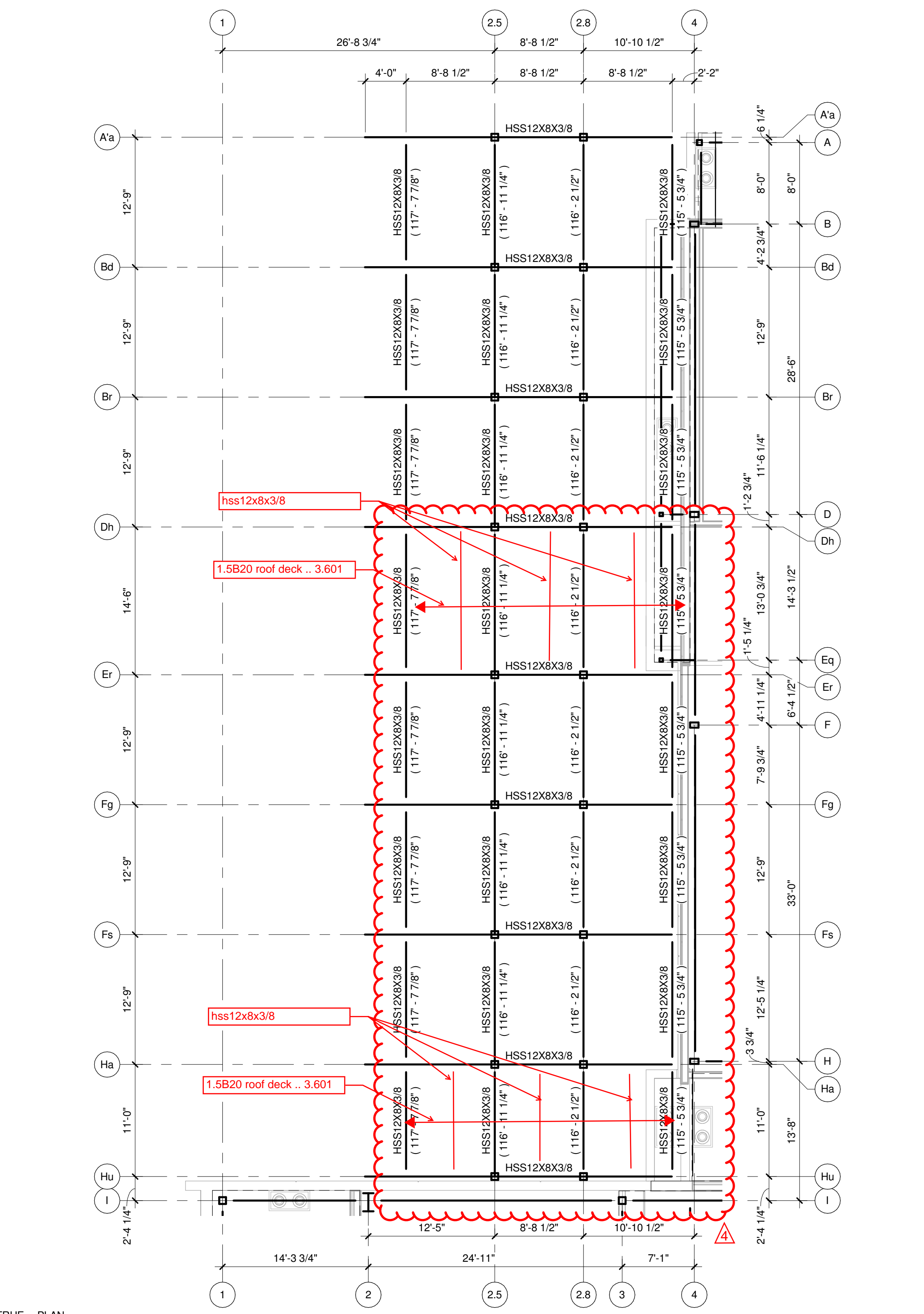
ENLARGED HIGH ROOF FRAMING PLAN AREA D
1/4" = 1'-0"



ENLARGED ENTRY HIGH FRAMING PLAN AREA E
1/4" = 1'-0"



ENLARGED ENTRY CANOPY LOW FRAMING PLAN AREA E
1/4" = 1'-0"



CANOPY ROOF FRAMING PLAN AREA A
1/8" = 1'-0"

KEYED NOTES

- 3.541 CAP EACH END OF HSS HEADER BEAM.
- 3.542 WELD ALL AROUND TO EMBED PLATE IN PRECAST WALL. LOAD TO PRECAST AT EACH OUTRIGGER (V=2.9K, M=104"K).
- 3.543 WELD OUTRIGGER ALL AROUND TO HSS HEADER BEAM.
- 3.544 NO CONNECTION ALLOWED FROM CANOPY TO AREA C. MAINTAIN 6 INCH GAP BETWEEN CANOPY STRUCTURE AND AREA C STRUCTURE.
- 3.602 ROOF DECK IS 1 1/2" DEEP, WIDE RIB, 20 GAUGE METAL DECK. FASTEN ROOF DECK TO SUPPORTS WITH #12 SCREWS AT 6" ON CENTER AND THREE #10 SCREWS PER SPAN IN SIDLAPS. (S67-3)
- 3.613 SEE DETAIL S-522 AND SECTION DETAIL 7/S-522 FOR MASONRY SHEAR TRANSFER BRACING.
- 3.614 PROVIDE BENT PLATE DECK SUPPORT FULL LENGTH OF THIS BEAM/JOIST GIRDER. SIMILAR TO DETAIL 17/S-552 EXCEPT ATTACH WITH #10 SCREWS AT 6" O.C.

ROOF FRAMING PLAN GENERAL NOTES:

1. SITE DATUM OF FINISHED FIRST FLOOR INDICATED ON CIVIL SITE PLAN = ELEVATION 100'-0" FOR AREAS A, B, C, & D OR ELEVATION 97'-6" FOR AREA E ON STRUCTURAL DRAWINGS.
2. FIELD VERIFY ALL DIMENSIONS, BRING ANY DISCREPANCIES TO THE ATTENTION OF THE ARCHITECT/ENGINEER FOR FINAL DECISION.
3. REFER TO SHEET S-001 FOR STRUCTURAL LEGENDS, ABBREVIATIONS, AND SYMBOLOLOGY.
4. REFER TO SHEET S-00x FOR ROOF LOADING PLAN AND SPECIAL JOIST LOADING REQUIREMENTS.
5. REFER TO SHEETS S-541 AND S-542 FOR TYPICAL DETAILS NOT REFERENCED ON THIS SHEET.
6. REFER TO SHEET S-601 FOR STRUCTURAL SCHEDULES.
7. MINIMUM JOIST BEARING LENGTH REQUIREMENTS ARE AS FOLLOWS UNLESS NOTED OR DETAILED OTHERWISE:
 - AT MASONRY WALLS
 - "K" SERIES - MIN. 4"
 - "KCS" SERIES - MIN. 4"
 - "LH" SERIES - MIN. 6"
 - "DLH" SERIES - MIN. 6"
 - "K" SERIES - MIN. 4"
 - "KCS" SERIES - MIN. 4"
 - "LH" SERIES - MIN. 6"
 - "DLH" SERIES - MIN. 6"
 - AT CONCRETE WALLS
 - "K" SERIES - MIN. 4"
 - "KCS" SERIES - MIN. 4"
 - "LH" SERIES - MIN. 6"
 - "DLH" SERIES - MIN. 6"
 - AT STEEL BEAMS
 - "K" SERIES - MIN. 2 1/2"
 - "KCS" SERIES - MIN. 2 1/2"
 - "LH" SERIES - MIN. 4"
 - "DLH" SERIES - MIN. 4"
8. SC = SLIP CRITICAL END CONNECTION. OMIT SHOP PAINT, INSTALL BOLTS FULLY PRETENSIONED.
9. OUTRIGGERS ARE 2.5K3 AT 6'-0" O.C. SPACING MAXIMUM. MINIMUM S=1.2IN3, MINIMUM I = 1.5IN4.
10. JOIST EXTENSIONS ARE R9. MINIMUM S=1.673IN3, MINIMUM I = 2.091IN4.

NOTE: UNO CONNECTIONS THIS CANOPY TO BE WELDED ALL AROUND 3/16" FILLET, EXPOSED ENDS CAPPED. STEEL EXPOSED TO VIEW IN FINAL CONDITION SHALL BE WELDED ALL AROUND 3/16" GROOVE WELD AND GROUND SMOOTH

No.	REVISION/SUBMISSION	DATE
1	ADDENDUM 1	03/01/2019
	ISSUE FOR BID	02/07/2019
	ISSUE FOR PERMIT	01/17/2019

No. REVISION/SUBMISSION DATE

PROJECT No: 1303500-160264.01